

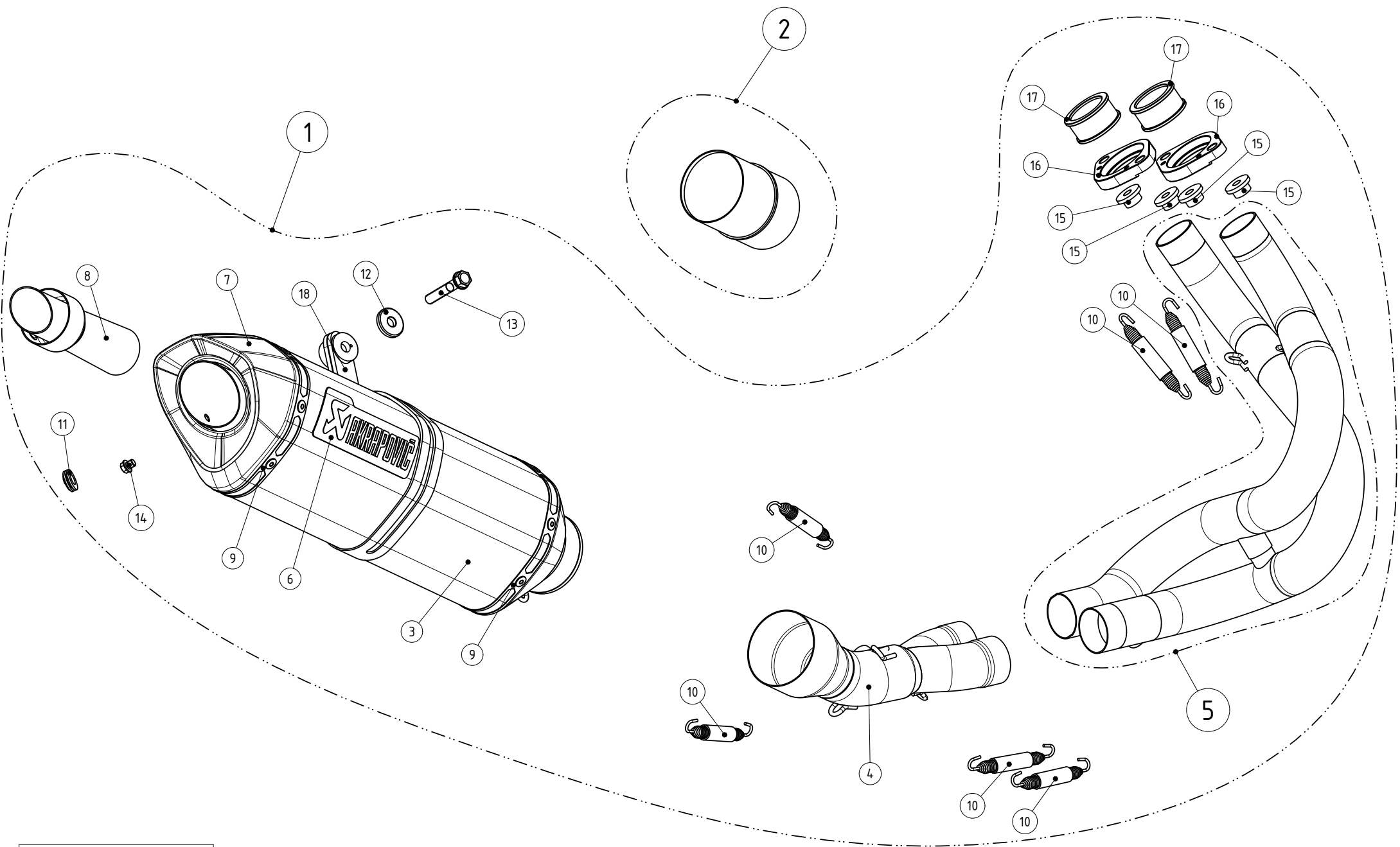


Racing Line (Titanium)

Product code: **S-K6R7-HT**

The Akrapovič Racing system is designed for riders who demand maximum performance. The Racing system is lighter compared to the stock exhaust system and features exceptional production quality, hi-tech materials, and, of course, increased engine performance combined with pure racing sound output. This system is designed for racing purposes only.

TECHNICAL DATA	UNIT	STOCK	AKRAPOVIČ	DIFFERENCE
maximum power	kW	50.7 at 8770 rpm	53.1 at 8820 rpm	+ 3.8 at 9560 rpm
	HP (m)	69 at 8770 rpm	72.2 at 8820 rpm	+ 5.1 at 9560 rpm
	HP (i)	68.1 at 8770 rpm	71.2 at 8820 rpm	+ 5 at 9560 rpm
maximum torque	Nm	63.4 at 7020 rpm	64.6 at 7000 rpm	+ 4.4 at 5000 rpm
	lb-ft	46.8 at 8770 rpm	39.2 at 8820 rpm	+ 2.8 at 9560 rpm
weight	kg	8	4.1	- 3.9
	lb	17.6	17.6	- 8.6
static noise level	dB	92	92	0



MUFFLER REPAIR KITS	
REPACK	19
SLEEVE	20

WARNING! EC TYPE APPROVAL IS VALID ONLY WHEN OPTIONAL CATALYST IS INSTALLED!

No.	SALES CODE	DESCRIPTION	QTY.
1	S-K6R7-HT	S KA ER6-N/F RAC 12 HSLSMST	1
2	P-KAT-036	katal. sest. SS D62/65×47/85 EU3 ER6	1
3	M-HZ05502T	M HSO ER6 12 S65Z18 S400/45 C53Z9/22	1
4	L-K6R7	LP SS 2×D38/45/65 LAM KA ER6 12	1
5	H-K6R7	HE SS 2×D35/38 POV KA ER6 12	1
6	P-HST2AL	nalepka Akrap. HOR 150 AL	1
7	V-EC173	SRO zad. CA Z9 TI za KA ER6N/F 12	1
8	V-TUV112	vložek ses. HOM SS D35/40/82/D48 KON	1
9	P-TT27	trak zak. TI L=386 S=16 Z TI 0,65 TT27	2
10	P-S1	vzmet SS D10×80 Tip1 z zašč. gumo S1	6
11	P-GUV004	gumi vložek D18 nased-D13 logotip	1
12	P-DR7	puša dis. AL D8,5/25×4 ELOX	1
13	P-FB23	vijak šest. prirob FE M8×45 SC	1
14	P-FB56	vijak šest. prirob SS M6×6 S=8 imb S=4	1
15	P-FN12	matica šest. prir SS M8 SC DIN6923 rebr	4
16	P-F38	prirob. AL D38,7/62 F38	2
17	P-S6	puša gl. SS D35/42×21 SU GSX600... P-S6	2
18	P-MCTZ36	MC CA Z TI 60/18×14/100/32 TZ36X	1
19	P-RPCK26	MMRCK tip 26	1
20	P-RKS323ZT40	MRRSK tip 323	1

KAWASAKI ER-6 n/f

 STOCK

 AKRAPOVIC RACING

